

Clinton College is accredited by the Transnational Association of Christian Colleges and Schools (TRACS) to award associate and baccalaureate degrees. Contact TRACS at Post Office Box 328, Forest, Virginia 24551 or call (434) 525-9539 or fax (434) 525-9538 (www.tracs.org) for questions about the accreditation of Clinton College.

Memberships/Affiliations

NAFEO National Association for Equal Opportunity in Higher Education
CHEA Council on Higher Education Accreditation
ACE American Council on Education
CACRAO Carolina Association of Collegiate Registrars and Admissions Officers
SASFAA Southern Association of Student Financial Aid
York County Chamber of Commerce

MISSION STATEMENT

Clinton College was founded in 1894 by the African Methodist Episcopal (AME) Zion as private arts liberal arts institution. The College is committed to facilitate achievement, moral and spiritual growth, leadership development, and citizenship in a global society. (revised March 7, 2013)

PHILOSOPHY OF EDUCATION

Since its founding in 1894, Clinton College has strived to offer an education to those who may not have an opportunity to pursue higher education. Founded by the Christian Education Department

- To offer experiences that encourage students to develop effective methods of oral, written and technological communication

Spiritual:

- To foster learning in an environment that foster religious values, through academic courses, Beacon Forum, and relevant programs
- To encourage students to learn to respect all of humankind
- To encourage participation in religious activities
- To assist students in fostering unconditional positive regard for others

Social

- To assist students in becoming socially conscious and function as responsible citizens in a diverse society
- To encourage students to understand and appreciate other cultures
- To provide opportunities for students to develop good leadership skills

Moral/Ethical

- To encourage students to develop moral and ethical values
- To provide experiences where students learn to operate on principles of

Clint

Clint
assoc
the D
and t

Any
imme
crime
Publi
Resid
camp
imme

Fire Plan:

The residence halls, administration/classroom building, library, student recreation center and cafeteria are of masonry construction and have minimal structural vulnerability to fire. The Early Childhood Education building and Art Building are of frame construction but are equipped with two exits each, are single story, and have low traffic patterns. All buildings are equipped with multi-purpose dry chemical fire extinguishers, which are inspected semi-annually. Additionally, the Slade Martin Hall is equipped with a pull-down fire alarm.

In the event of a fire, move immediately to the nearest exit. Notify public safety, campus officials, and/or call 911 immediately. Residence hall directors, faculty members or other staff present in the buildings that are involved in a fire should immediately verify the presence and safety of all persons known to be in the building. In no instance should students or staff persons ~~re-enter a burning~~ re-enter a building. (Exit plans attached)

Medical Emergency:

Threatening Calls/Harassing Calls/Bomb Threat - Checklist

Time of Call: _____ am/pm Caller ID Number _____

Attempt to keep the caller on the phone for as long as possible. Stay calm!

Be courteous! Listen! Do not interrupt the caller. Notify someone else nearby while the caller is on the line, whenever possible.

Write down the exact words of the caller:

Ask: (Often the person will respond or provide significant information that provides clues to the identity).

Seek Information from Caller	Record Information
Location of the device. Bomb threat	
When will it go off? Bomb threat	
Time remaining? Bomb threat	

What kind of device is it? Bomb threat

Juvenile	Local
Approximate: Age Race	Long Distance

Evacuation for Rock Hill and Clinton College:

--	--	--	--

COVID Response Plan

Safety Measures

Clinton College has implemented new aggressive cleaning and disinfecting procedures. In addition, the College has limited and is managing access to buildings across campus. Currently, staff is working remotely, and the campus is closed to the public. Essential employees are working staggered shifts and only come to campus as needed. As the College plans for the safe return of administration, stricter safety measures and mandatory safety training for all faculty and staff will be enforced to ensure the safety of all administrative staff. While students are experiencing a rewarding remote learning program during the Fall 2020 semester, the administration will safely return to campus in three phases (see below):

<

<

<

<

<

<

<

<

1.

2.

1.

2. Work from home rotating days which include Monday and Wednesday or Tuesday and Thursday

3. All employees will work remotely on Fridays

PHASE II

Phase II: October 16th – December 2020 (Holiday Break)

1. All Employees Return to Work on staggered shifts Monday through Thursday.
Employees would either work Monday/Wednesday or Tuesday/Thursday.
- 2.

Phase III Tentative Dates: January 4th, 2021

Note: The tentative dates of each phase are subject to change due to changes with the COVID-19 pandemic

For the safety and well-being of all staff, faculty, students, and community, it is required to wear a mask at all times, practice personal hygiene such as washing hands frequently, maintain social distance (6 ft. apart), and staying at home when sick.

Faculty and staff members who report to work, must email humanresources@clintoncollege.edu with temperature checks before coming into work.

COVID-19 Resources

cdc.gov

<https://www.scdhec.gov/>

Classroom Instructions during COVID-19

Online Classes

Classes for the fall semester will be exclusively online. In August, we launched two different remote learning programs.

Bear Learning

Bridging Excellence and Remote (BEAR) Learning is our regular 15-week courses, typically offered face-to-face on campus, but will be taught virtually in fall 2020, using the learning management system BrightSpace.

Clinton Global

Clinton Global is a fast-paced, intensive online program for highly motivated adult learners, who will take one five-week course at a time and complete four courses each semester and one in the summer. Students earn an associate degree in Business Administration or Religious Studies in 2 ½ years and can continue in the program to complete a bachelor's degree.

Athletics

The health and safety of our coaches, athletic staff, student-athletes, fans, and supporters remain the priority of our Athletic Department. It is for this reason, that Clinton College will suspend all basketball competition, drumline, and cheerleading activities for the Fall 2020 semester.

As Executive Leadership, based upon CDC guidelines, that it is safe to return to campus in January 2021, it is our hope that we will be able to return to campus and begin the 2021 basketball season and resume all athletically related activities. However, it should be reiterated that the welfare of our student-athletes will remain the primary factor in all Clinton College operational decisions. The standards for canceling, and resuming operations within

Athletics, reflect the position of our President Dr. Lester A. McCorn, and the position of our governing athletic conference the USCAA.

For updates within Athletics please visit our Golden Bear website- www.clintongoldenbears.com

Events

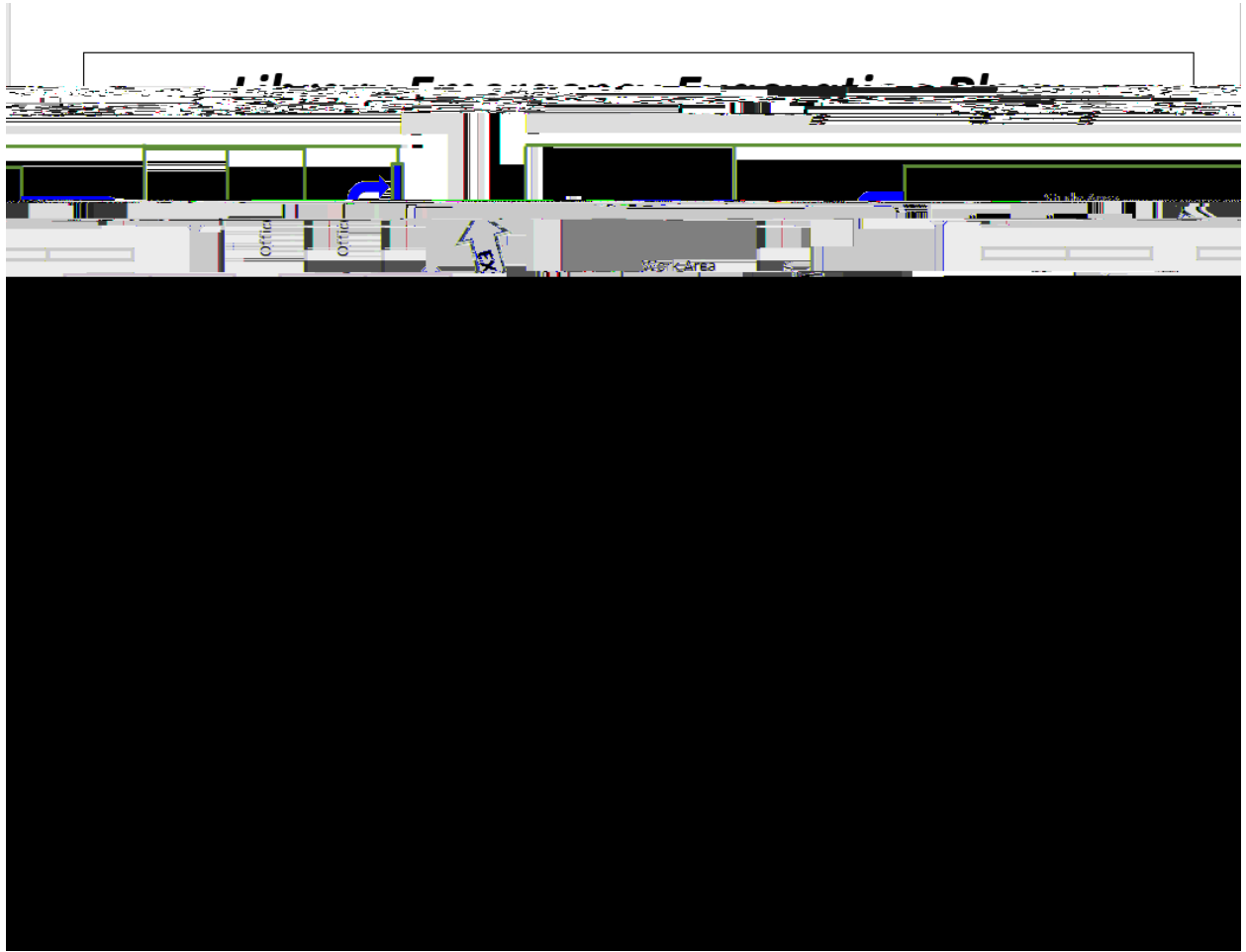
On-campus events for the 2020-2021 school year have been either canceled or moved to a virtual space. Check the [calendar](#) periodically for updates on events.

Travel Restrictions

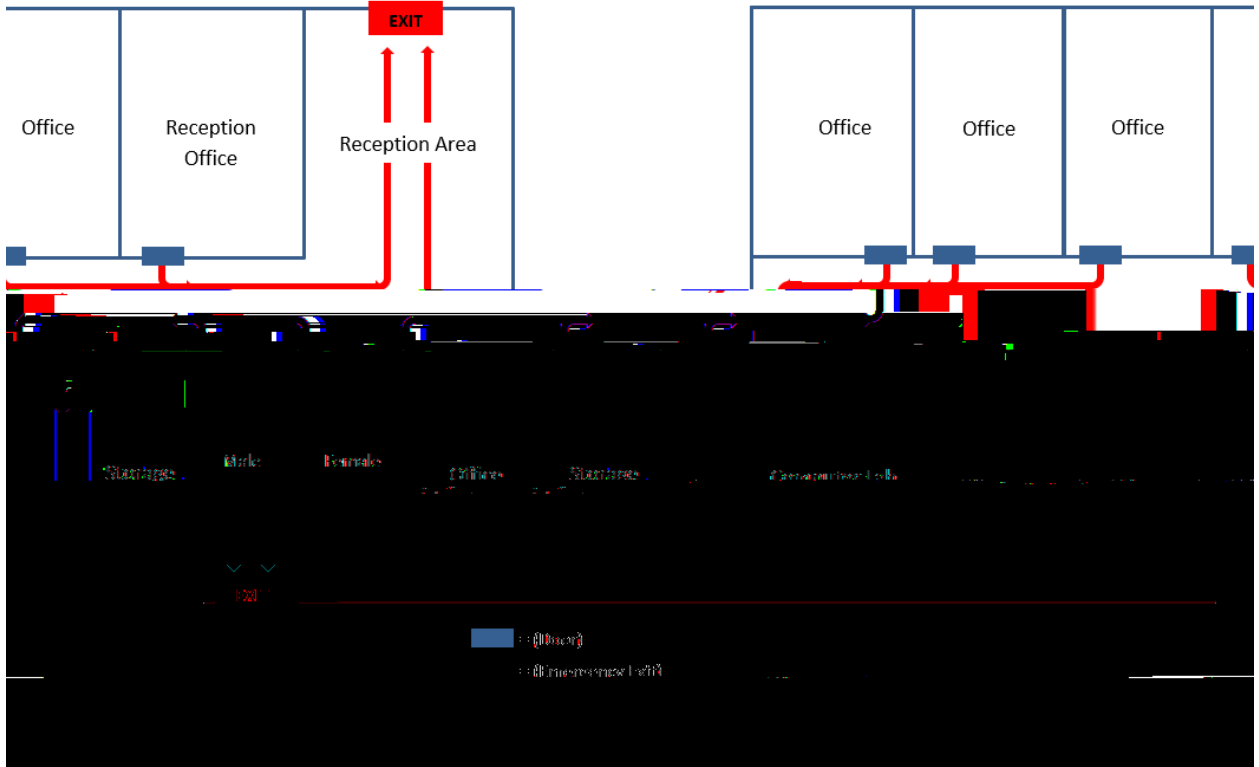
All work-related travel by all faculty, staff, or students on behalf of Clinton College is suspended until further notice. Any college-related travel should not be planned or scheduled at this time. We encourage everyone to explore alternative virtual options for collaboration and engagement.

Arrest – On Campus Student Housing Facilities

	2015	2016	2017	2018
Weapons: carrying, possessing, etc.	0	0	0	0
Drug abuse violations	0	1	0	0
Liquor law violations	0	0	0	0

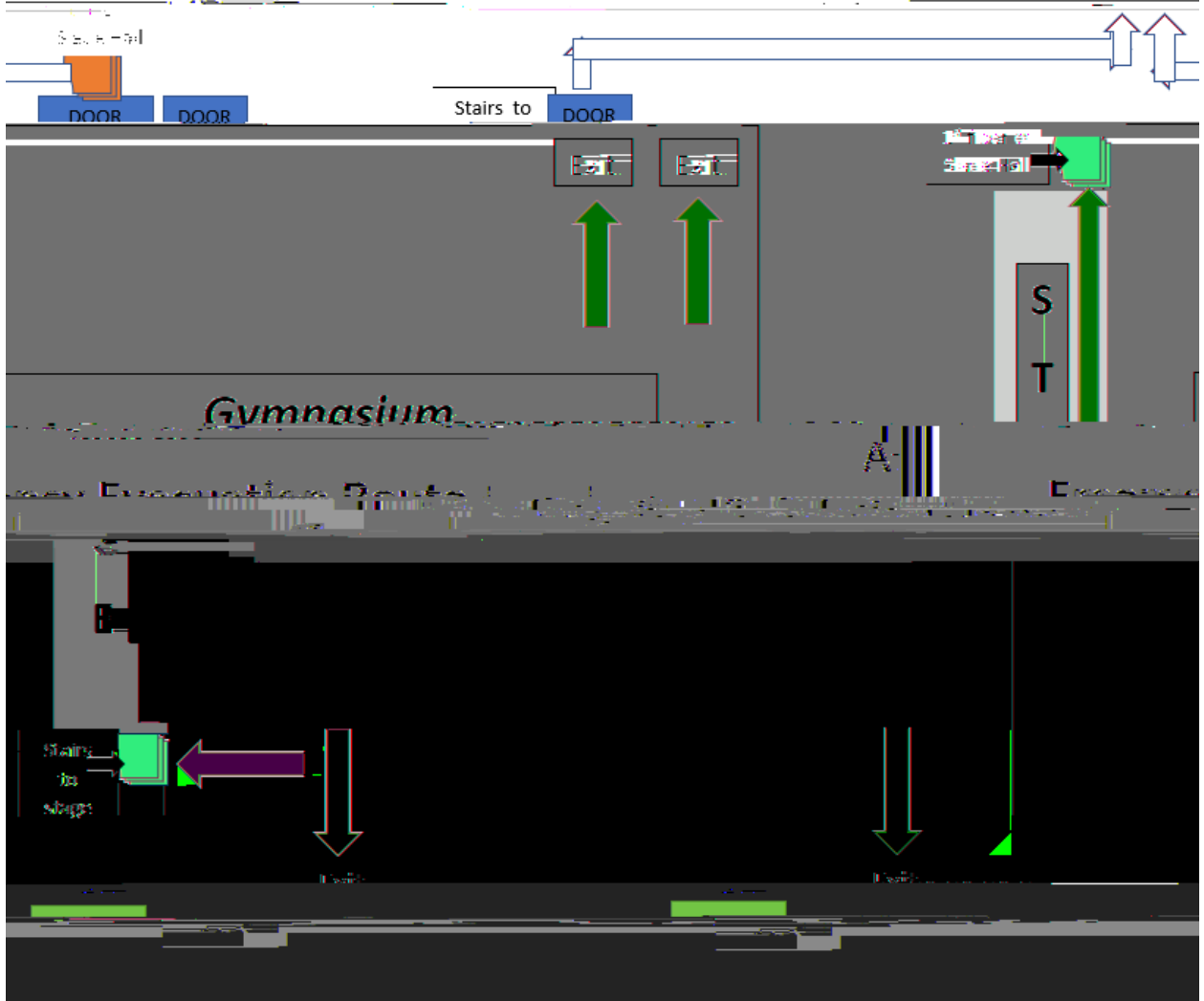


Fisher Building (FDIC) Emergency Evacuation Routes

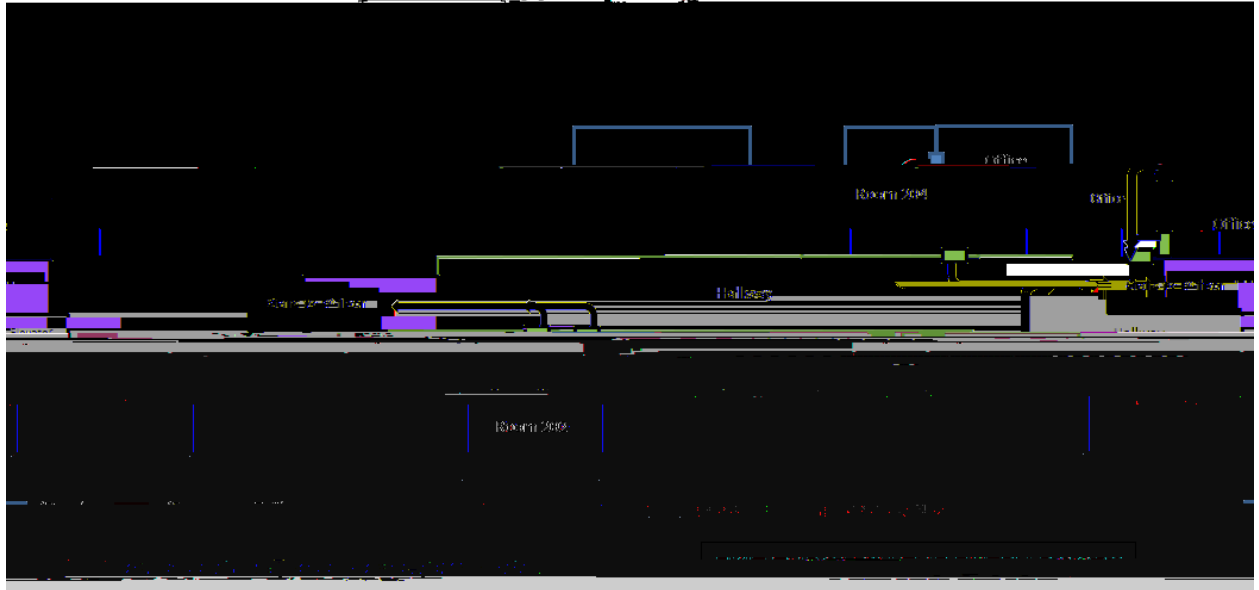


Exit through front door of Slade Hall

Stairs to



Slide Hall (2nd Floor) Emergency Evacuation Routes



China Student Center Emergency Evacuation Plan

